



ShenTong Valve Presentation

JIANGSU SHENTONG VALVE CO., LTD.
www.stfm.cn

◆ *Professional Fluid Control Solutions Provider*



Catalogue

01

Company Overview

02

Production and Process

03

Product application

04

Sales network and Customers

01

STV Overview



Founded

1966



Location

Nantong
China



Main Business

Industrial Valve
Ball Valve, Butterfly
Valve,
GGC etc.



Employee

1000±



Land area

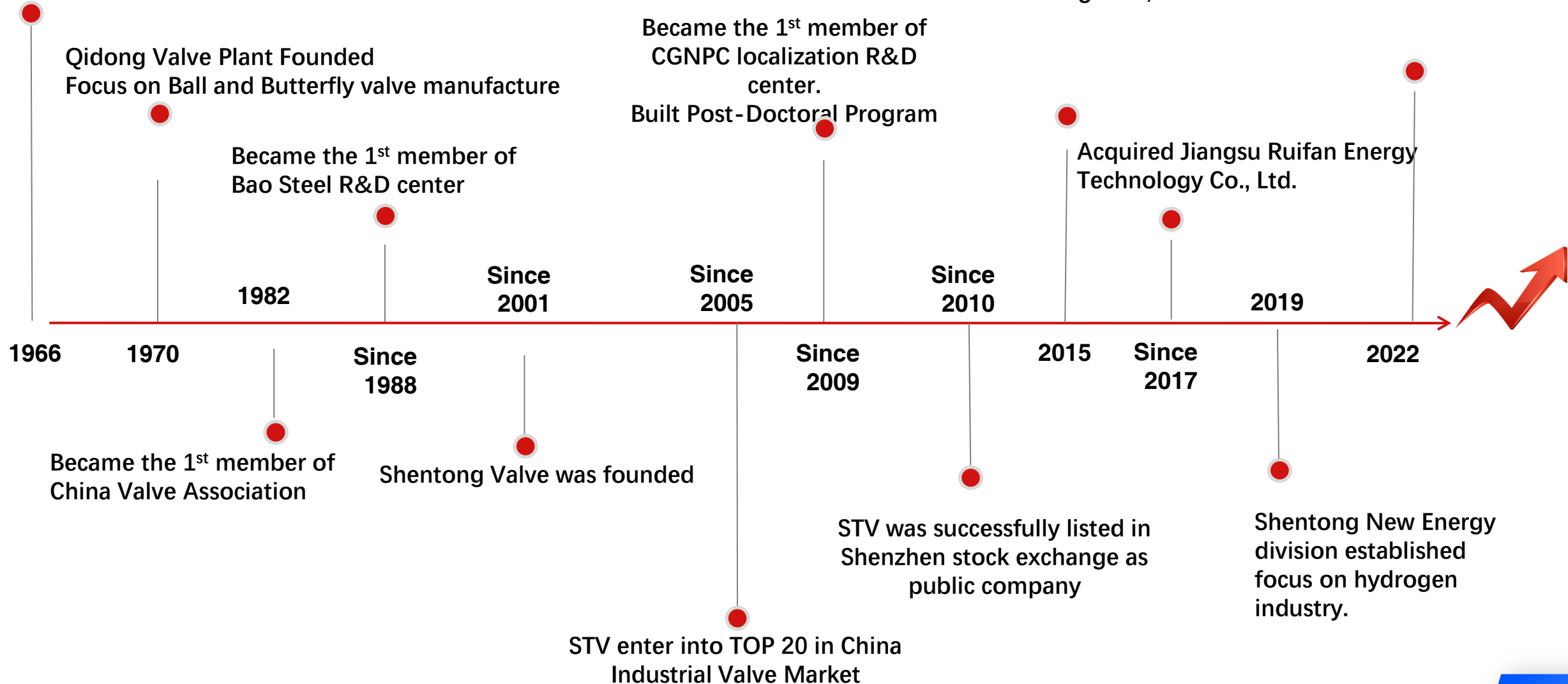
250,000m²



Revenue 2021

USD 300 Million

Qidong Nanyang Agricultural Machinery Plant founded

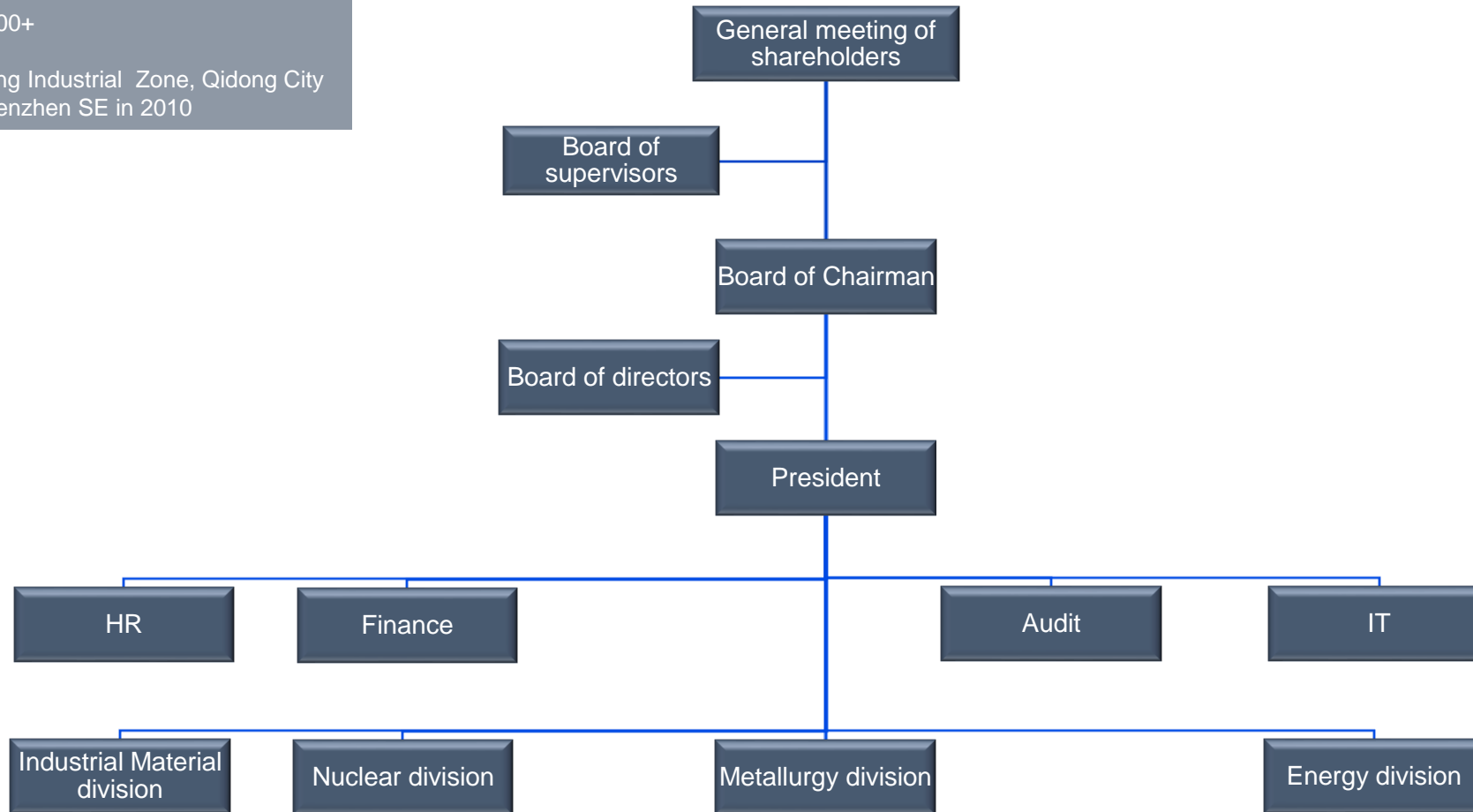


1.3

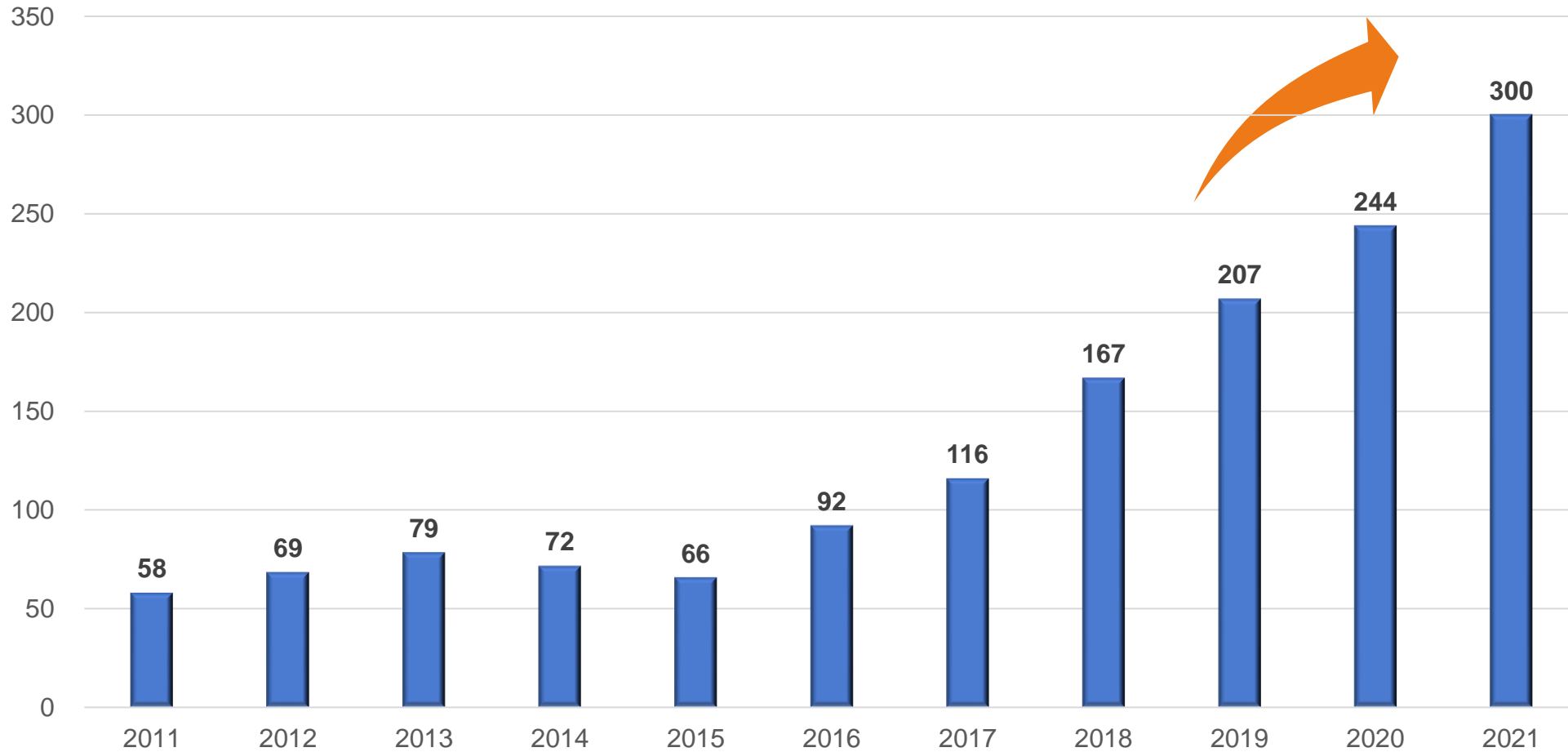
Organization Chart



Staff in total: 1000+
Founded in 1966
Location: Nanyang Industrial Zone, Qidong City
Listed on the Shenzhen SE in 2010



Unit: Million USD





02



Product and Process



- Founded: 2010
Product: Gate, Globe, Check, Ball, Butterfly, Nuclear valve, Control valve.
- Industry: Oil & Gas (Onshore, Offshore), Nuclear, Chemical, Metallurgy, Pipeline.
- Cover Area: 250,000m²
- Maximum Capacity: 280 million USD/year





Foundry

- Founded: 2007
- Product: Sand castings
- Material: CS, SS, Duplex, Super Duplex, Other special Alloy
- Cover Area: 130,000m²
- Maximum Capacity: 4000 tons/year

- Precision Foundry
- Founded: 2007
- Product: Precision casting
- Material: CS, SS, Duplex, Super Duplex, Other special Alloy
- Cover Area: 100,000m²
- Maximum Capacity: 1000 tons/year



2.4 Non Destructive Testing (NDT)



UT



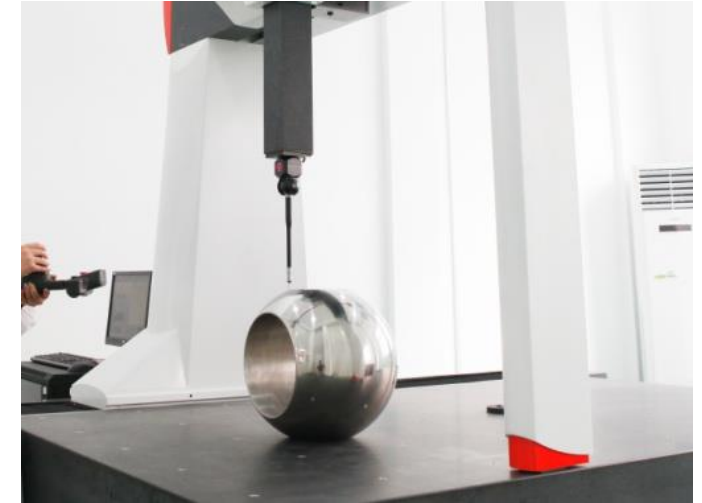
RT



MT



PT

**Impact Test****Spectral Analysis****3D Coordinate Instrument****PMI Test****Micro Structure Test**



Flow Resistance Test



Cryogenic Testing



Fire Test



Pressure Test



Low Emission Test



High Temp. Test

- Quality Accreditation of Industrial Valve :
- APIQ1 For Oil and Gas industry quality management system, issued by API
- ISO 9001-2008 Issued by CNAS
- ISO 14001-2015 Issued by CNAS
- OHSAS 18001-2007 Issued by CNAS
- API 6D For pipeline valve, issued by API
- API 609 For API609 Valve, issued by API
- API600 For ASME Gate Valve
- API607 Fire Safe Test, Issued by TUV
- API608 For metal Ball valve, issued by API
- ISO15848 Issued by TUV
- API591 Issued by TUV
- ABS For Marine Valve , issued by ABS under processing
- BV For marine valve, issued by BV
- CE-PED EU Pressure Equipment Directive, Issued By BV
- TS China manufacture license of special equipment
- Civil Nuclear Safety Design License & Manufacturing License, Issued by NNSA
- SIL-IEC61508 SITIIAS



2.8 Technical Innovation



Patent: 280+

- ◆ Technical staff: 273
- ◆ Senior expert: 12
- ◆ Consultant: 17
- ◆ Engineer: 125

Testing ability:

Temp. -196°C ~ 600°C
Pressure: Max. 76Mpa
Size: ½"~60 Inc"



Cryogenic Butterfly Valve



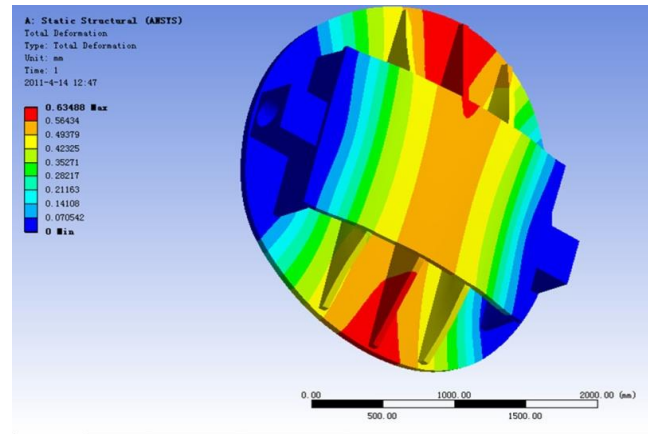
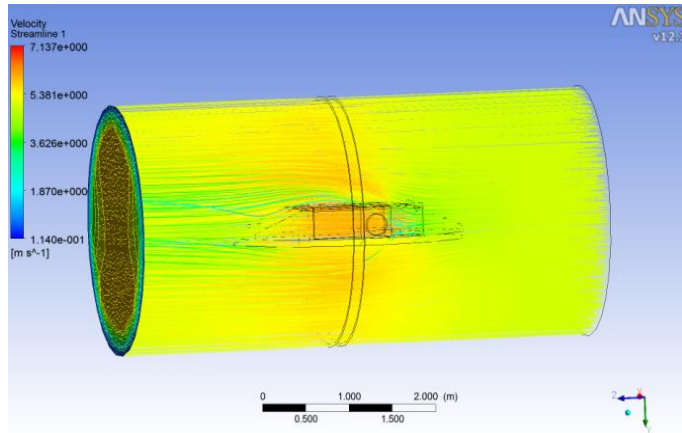
Soft/ Metal to Metal
Ball Valve



Cryogenic Gate Valve

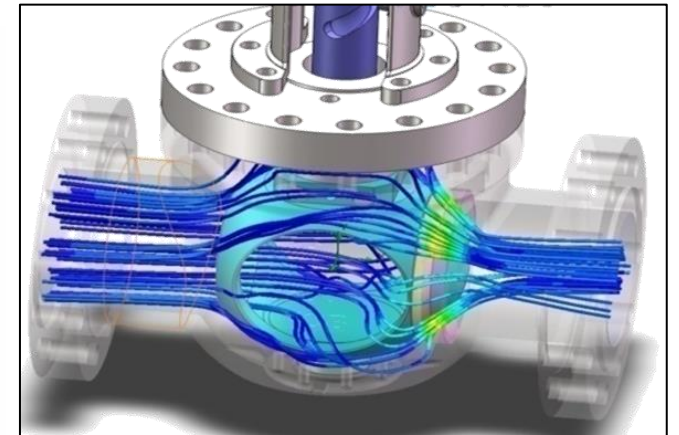
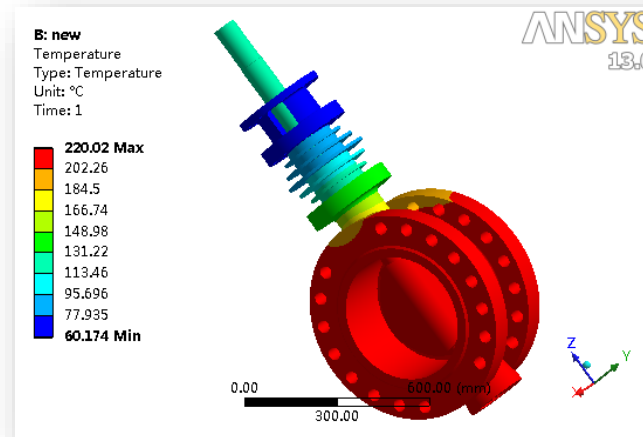


Control Valve



With the development of technical R&D, the use of software of ANSYS, JSCAST and SolidWorks have been widely applied to model analysis and design for STV.

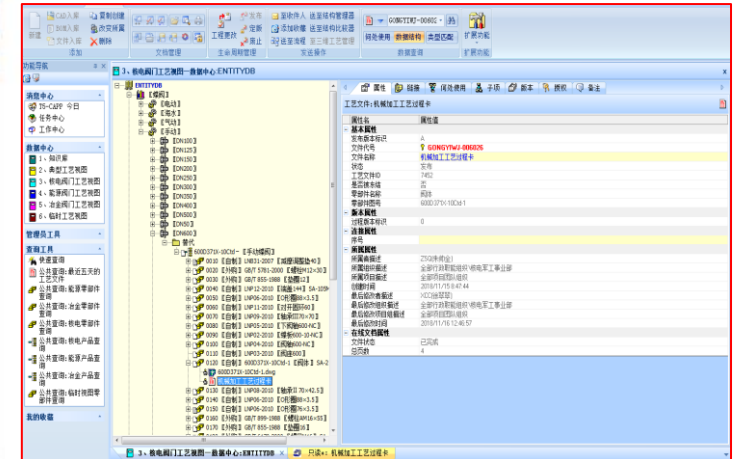
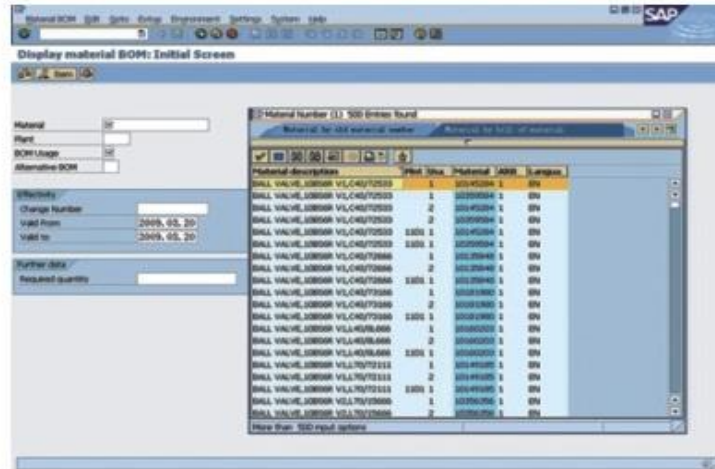
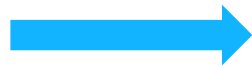
- ◆ Fluid Analysis
- ◆ Finite element structural analysis
- ◆ Thermo mechanical analysis
- ◆ Stress Analysis





Advanced ERP System

STV adopts advanced SAP System to manage resources of all factories, it aims to further improve the factory management and improves efficiency.



The use of automated warehouse has greatly increased the automation and accuracy of management.

Automated Warehouse System





Moulding Workshop



Wax mold 3D printing



Heat Treatment Control



Melting Workshop



3D printing casting

STV Valve quality control from the raw material process.



Vertical Lathe



Horizontal type Lathe



Machining Center



Sphere Grinder



CNC machine



DN500 Sphere Grinder



Robot Automatic overlaying Welding Equipment



Testing workshop



Butterfly Assembling Workshop



Ball Assembling Working

Specialized fabrication workshop

- Ball, Butterfly, Casting Valve, Special valve and Nuclear Valve Workshop.
- Standard product and Customized Product
- Strongly integrated capacity to ensure the delivery date.



Special Valve Workshop



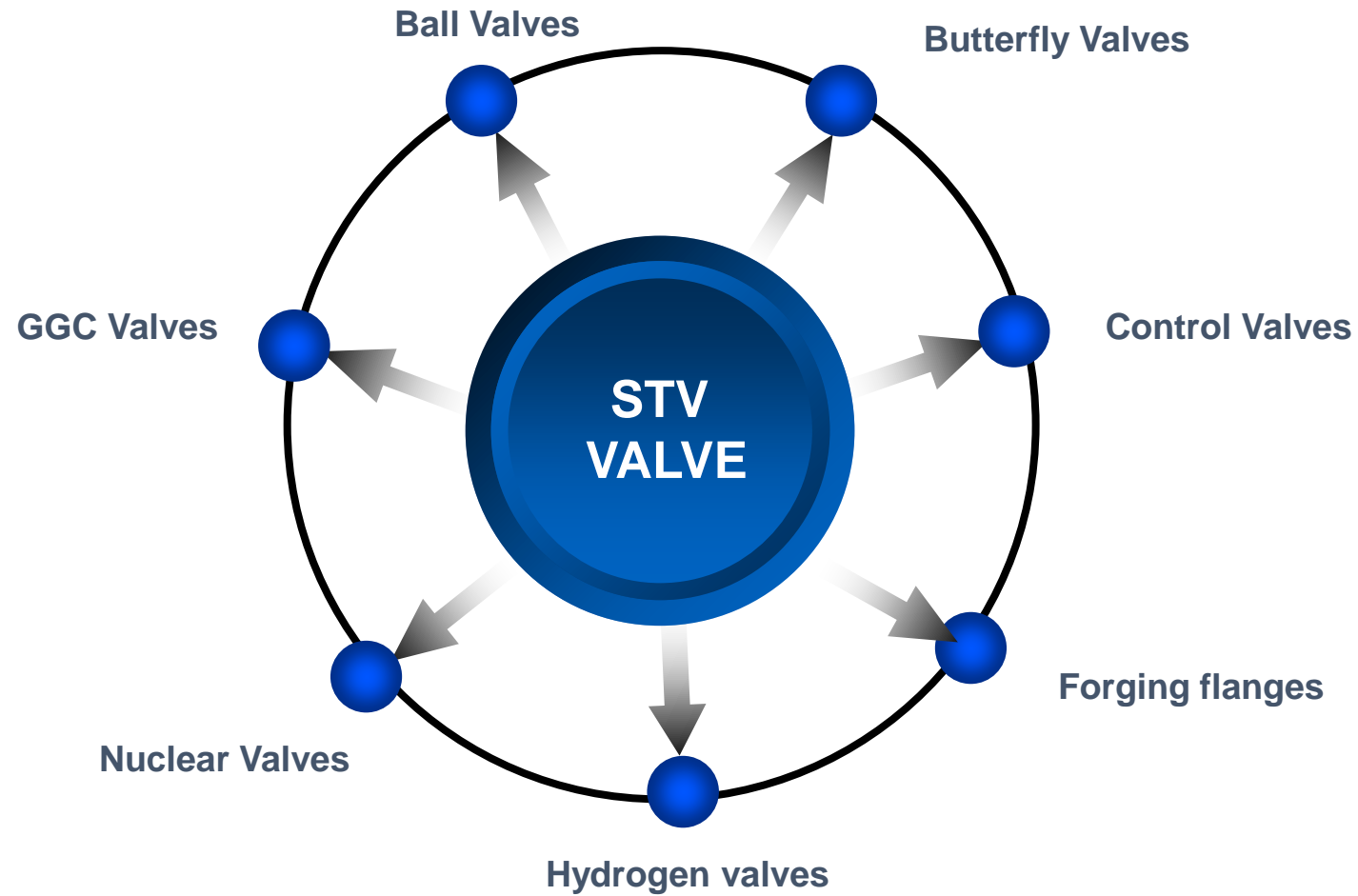
Painting Line



03



***Product application and
Customers***



Ball Valve Series

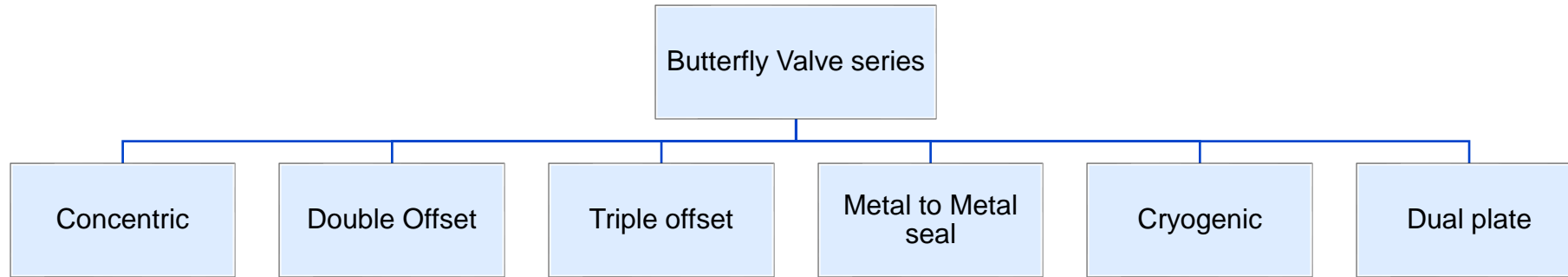
1-PC Floating Ball Valve
2-Pc Floating Ball Valve
2-Pc Forged Floating Ball Valve
3-Pc Forged Floating Ball Valve
Cryogenic Ball Valve
Metal To Metal Ball Valve
2-Pc Trunnion Mounted Ball Valve
3-Pc Trunnion Mounted Ball Valve
Top Entry Ball Valve
Full Welded Ball Valve
Double Piston Effective Ball Valve
Lip Seal Trunnion Ball Valve

Range and Class

1/2-10", 150-300LB
1/2-10", 150-300LB
1/2-4", 150-1500LB
1/2-2", 150-2500LB
1/2-40", 150-1500LB
1/2-24", 150-2500LB
2-24", 150-1500LB
2-48", 150-1500LB
2-48", 150-1500LB
2-60", 150-1500LB
2-48", 150-1500LB
2-48", 150-600LB

Materials

Carbon Steel, Stainless Steel, Alloy Steel, Duplex Steel
Carbon Steel, Stainless Steel, Alloy Steel, Duplex Steel
Carbon Steel, Stainless Steel, Alloy Steel, Duplex Steel
Carbon Steel, Stainless Steel, Alloy Steel, Duplex Steel
Carbon Steel, Stainless Steel, Alloy Steel, Duplex Steel
Carbon Steel, Stainless Steel, Alloy Steel, Duplex Steel
Carbon Steel, Stainless Steel, Alloy Steel, Duplex Steel
Carbon Steel, Stainless Steel, Alloy Steel, Duplex Steel
Carbon Steel, Stainless Steel, Alloy Steel, Duplex Steel
Carbon Steel, Stainless Steel, Alloy Steel, Duplex Steel
Carbon Steel, Stainless Steel, Alloy Steel, Duplex Steel
Carbon Steel, Stainless Steel, Alloy Steel, Duplex Steel



Concentric Butterfly Valve

Size :	2"~24" (DN50~DN600)
Rating:	200psi (PN1.0, PN1.6)
Body Material:	C.I. D.I. C.S, S.S.
Elastomer Material:	EPDM, NBR, PTFE, Viton
End Connection:	Wafer, Lug, Double Flange

High Performance Butterfly Valve

Size :	3"~158" (DN80~DN4000)
Rating:	150lb ~ 900lb (PN20~PN150)
Body Material:	Cast steel, Stainless steel
Disc sealing:	PTFE, Graphite laminated
End connection:	Wafer, Lug, Double Flange

Gate Valve Series

Conventional Gate Valve
Non- Rising Stem G.V.
Pressure Seal G.V.
Cryogenic G.V.
Conduit G.V.
Metal to Metal Conduit G.V.
Parallel slide G.V.
API603 G.V.
API602 Forged G.V.

Globe Valve Series

Conventional Globe Valve
Angle GI.v
Stop Check Valve
Pressure Seal GI.v
Cryogenic GI.v.
Quick-Closing GI.v
Y-type GI.V.
API603 GI.v.
API602 Forged GI.v.

Check Valve Series

Conventional Check Valve
Pressure Seal C.v.
Lift Piston C.v.
Vertical Lift C.v.
Full Open C.v.
API603 C.v.
API602 Forged C.v.
Axial Flow C.v.
Dual Plate C.v.



LNG Pipeline Ball Valve



Pathway Ball Valve



Cage-guided Control Valve



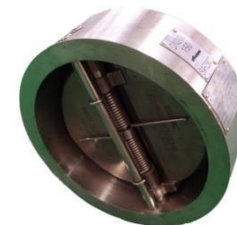
Globe Valve



High Performance Butterfly



Double offset Butterfly



Wafer check Valve



Gate Valve



Vehicle-mounted relief valve

Apply to 35/ 70MPa vehicle hydrogen supply system



Locomotive cap valve

Designed for 35MPa compact hydrogen supply system



Pilot type solenoid valve

Designed for vehicle-mounted hydrogen supply system



Cylinder cap relief valve

Designed for 35MPa hydrogen tank cap



Combined non-return valve

Serve to 35/ 70MPa vehicle hydrogen supply system



Manual Globe valve

Apply to high pressure air supply system



High pressure safety valve

Apply to high pressure air supply system

For more information please visit at:
<http://m.chinastxny.com/>



A



B



C



D



E

A	Metallurgy
B	Nuclear
C	Power Plant
D	Energy
E	Offshore
F	Natural Gas Pipeline
G	Shipbuilding
H	Chemical



F



G

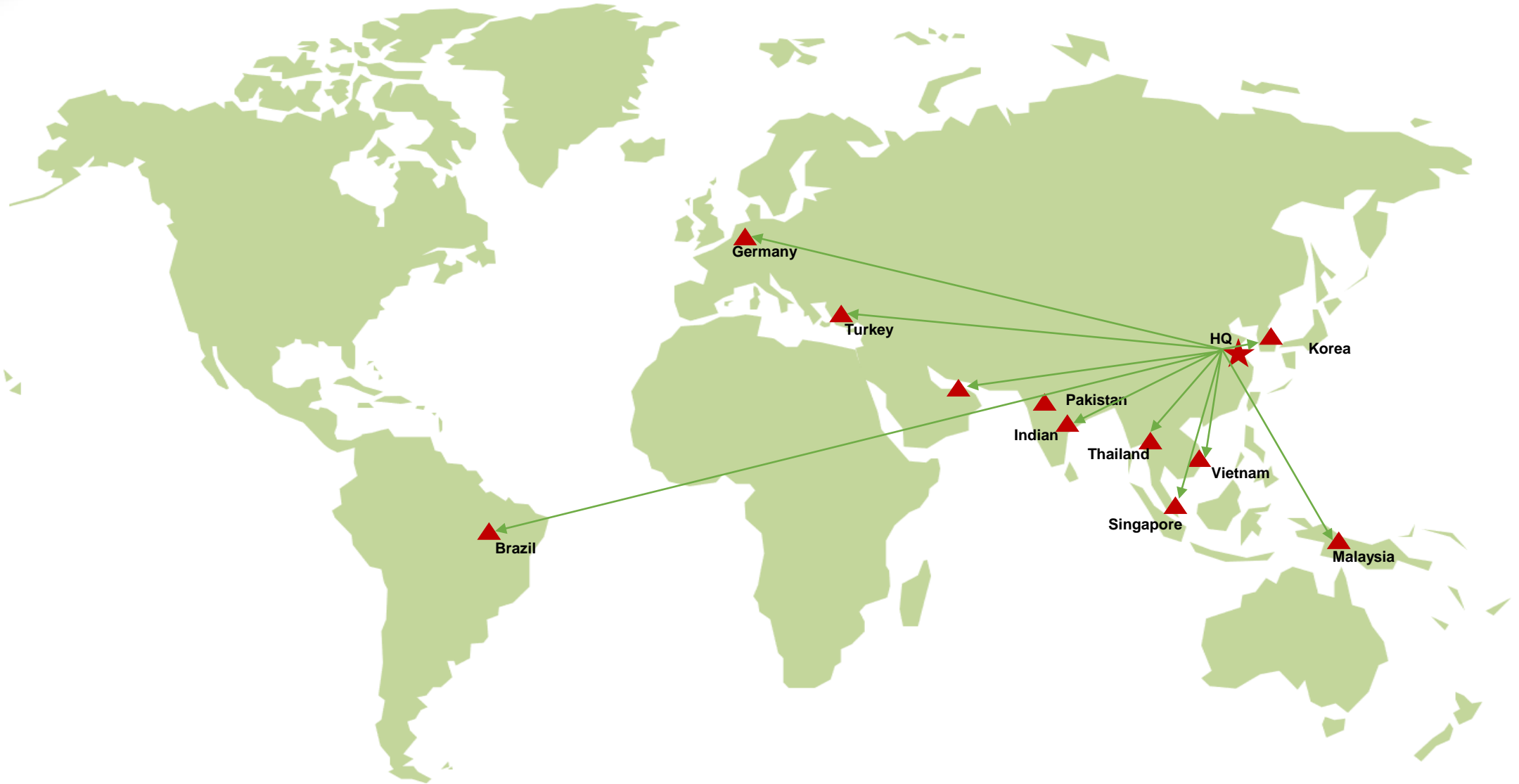


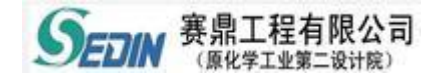
H



04

***Sales network and
Customers***



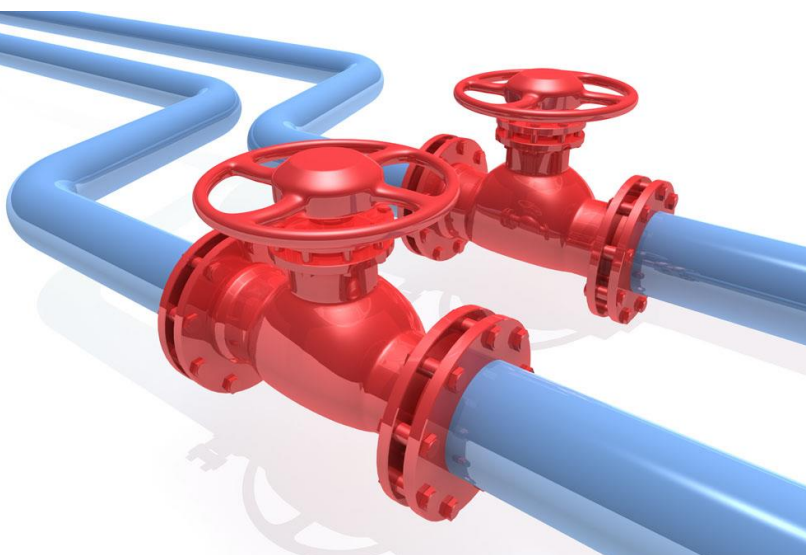




We provide you



• ***THANKS***



Aug. 2022

